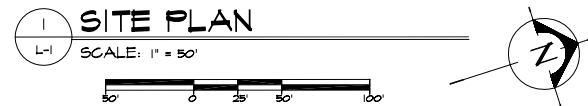
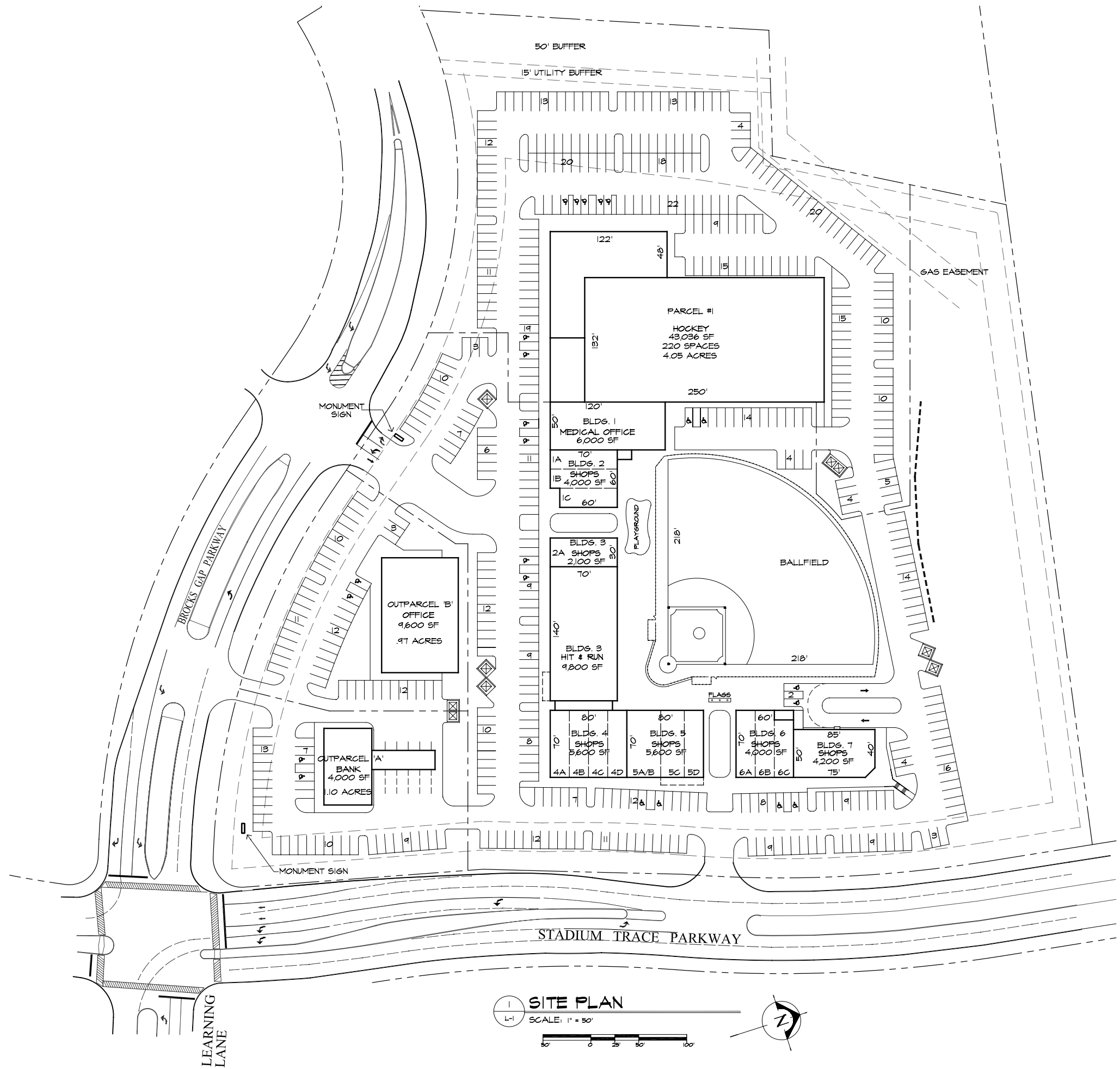


VICINITY MAP

| | |
|-------------------------|--------------------|
| SITE AREA: | 12.84 ACRES |
| BUILDING AREA: | |
| BASEBALL | 9,800 S.F. |
| MEDICAL OFFICE | 6,000 S.F. |
| RETAIL SHOPS | 25,500 S.F. |
| BUILDING 2 | 4,000 S.F. |
| BUILDING 3 | 2,100 S.F. |
| BUILDING 4 | 5,600 S.F. |
| BUILDING 5 | 5,600 S.F. |
| BUILDING 6 | 4,000 S.F. |
| BUILDING 7 | 4,200 S.F. |
| TOTAL | 41,300 S.F. |
| PARKING PROVIDED | 219 SPACES |
| PARKING RATIO | 5.30/MSF |
| PARCEL #1 | |
| HOCKEY | 43,036 S.F. |
| PARKING PROVIDED | 220 SPACES |



HA
Hiscutt & Associates
 ARCHITECTURE
 3655 Brookside Parkway
 Suite 575
 Alpharetta, Georgia 30022
 Phone: 770.753.8787
 Fax: 770.753.0285
 Web: www.hiscutt-ai-a.com

THESE DOCUMENTS ARE INSTRUMENTS OF SERVICE FOR USE SOLELY WITH RESPECT TO THIS PROJECT AND ARE NOT TO BE REPRODUCED OR USED FOR THE CONSTRUCTION OF ANOTHER PROJECT WITHOUT SPECIFIC AUTHORIZATION (COPYRIGHT 2011) HISCUTT & ASSOCIATES, P.C.

PROJECT:
Hoover Family Festival
 Stadium Trace Parkway at Brooks Gap Parkway
 Hoover, Jefferson County, Alabama
 FOR:
WATKINS RETAIL GROUP, INC.
 Atlanta, Georgia

SHEET TITLE:
PRELIMINARY SITE PLAN

ISSUE DATE:
 07.15.2011

PROJECT NO: 08-112
 FILE NAME: LI_11.07.15
 DRAWN BY: P.J.H.

SHEET 1 OF 1
L-1